

WALDORF SCHOOL OF BEND



PARENT HANDBOOK

2017-2018

*Receive the children in reverence,
Educate them with love,
Let them go forth in freedom
~Rudolf Steiner*

2150 NE Studio Rd, Suite 2
Bend, OR 97701
Phone: (541) 330-8841
Fax: (541) 330-9713
www.bendwaldorf.com

August 2017



WALDORF SCHOOL OF BEND

*It is aliveness that must be the guiding principle.
Joy and happiness in living,
a love of all existence, a power and energy for work.
The need for imagination, a sense of truth and a feeling of responsibility –
these are the three forces which are the very nerve of education.*

-- Rudolf Steiner

Our Mission Statement:

The Waldorf School of Bend community forges an inspired path for modern learning and social renewal. From the insights of Rudolf Steiner, we cultivate academic excellence through our experiential curriculum rich in the arts, sciences and practical works. We honor each child's unique spirit by building capacities of will, free thought, compassion and social responsibility. In this way, children develop with purpose to act as powerful world citizens.

Our Community Values:

- We support the well-being and wholeness of children through a curriculum that appropriately meets the intellectual, emotional, physical and spiritual needs within each developmental stage of their growth.
- We uphold excellence in education by creating meaningful teacher-student relationships, and joyful, artistic teaching that supports learning through inspiration, imagination, and intuition.
- We strive to bring the healing force of social renewal to life through our daily actions of service to others, kindness and compassion for humankind and stewardship for the earth.
- We believe that education is a collaborative effort and we strive to further ourselves as faculty, staff, and parents to become exceptional role models for our children and to create an inclusive community.

The Waldorf School of Bend is a non-profit, non-denominational, tax-exempt organization incorporated in the State of Oregon. WSB admits students of any race, color, national and ethnic origin to all the rights, privileges, programs, and activities generally accorded or made available to students at the school. It does not discriminate on the basis of race, color, national and ethnic origin in administration of its educational policies, admission policies, scholarship and loan programs, and athletic and other school administered programs.



WALDORF SCHOOL OF BEND

TABLE OF CONTENTS

Waldorf Education & The Waldorf School of Bend.....	1
Basic Principles & Elements of Waldorf Education.....	1
Affiliations	1
Educational Philosophy	1
Early Childhood Programs (Kindergarten & Pre-Kindergarten)	1
<i>Student-Teacher Ratio</i>	1
Arts in Education	2
Subject Programs	2
Practical Arts.....	2
Foreign Languages.....	3
Music.....	3
Festivals and Rhythms of the School Year.....	3
Friday Gatherings.....	4
School Verse	4
School Song	4
Existential Questions and The Role of Religion in the Waldorf Curriculum.....	4
Assessments and Screenings.....	5
Parent-Teacher Conferences	5
Class-Parent Meetings	5
End-of-the-year Student Reports	5
School Governance.....	5
The Faculty & College of Teachers	6
The Board of Directors	6
Administration	6
Parent Council.....	6
School Operations	7
Hours of Operation	7
<i>Early Childhood Program Hours</i>	7
<i>Grade School Program Hours</i>	7
<i>Afternoon Adventures</i>	7
School Arrival and Departure	7
<i>Sign In and Sign Out</i>	7
<i>Pick Up By Authorized Individuals</i>	8
Attendance and Tardiness Policy.....	8
<i>Grade School Absence Policy</i>	8
<i>Excused Absence includes</i>	8
<i>Experiential Excused Absence includes</i>	9
<i>Unexcused Absence includes</i>	9
<i>Early Childhood Absence</i>	9
<i>Grades Tardy Policy</i>	9
<i>Early Childhood Tardy Policy</i>	10
Restroom Use.....	10

WALDORF SCHOOL OF BEND

<i>Early Childhood Procedure</i>	10
<i>Grades Procedure</i>	10
Disaster Preparedness	10
Security and Visitor Policy	11
Emergency School Closure/Late Start	11
Substance Policy	11
Reporting Child Abuse or Neglect.....	11
Class Field Trips	11
Parent Volunteers.....	12
<i>Class Parent</i>	12
Pets.....	12
Tuition/Fee Payment and Refund Policy	13
School Photos.....	13
Lost and Found	13
Requirement for and confidentiality of Student Records	13
Communication	13
Telephone and Cell Phone Policy	13
Classroom Updates	14
Family Correspondence	14
School Newsletter	14
WSB Family Binder.....	14
All School Gatherings.....	14
Online Communication.....	14
Health and Nutrition	15
Snacks and Lunch	15
Illnesses.....	15
Medications.....	16
Head Lice Policy.....	16
Parent/Student Concerns & Discipline	16
Parent-Teacher Questions, Student Concerns & Communication Flowcharts	16
Student Success Plan (SSP) Outline	19
Waldorf School of Bend Code of Conduct.....	20
Discipline Philosophy	21
The Role of the Parent	23
Family Involvement and Volunteerism	23
Family Support.....	23
Families, Teachers and Administration Working Together.....	23
Dress Code	23
Items to be Kept at Home	25
Media Policy	25



WALDORF SCHOOL OF BEND

WALDORF EDUCATION & THE WALDORF SCHOOL OF BEND

Waldorf schools grew out of Anthroposophy (*anthropos* = human, *sophia* = wisdom), a philosophy developed by Rudolf Steiner. Born in 1861 to Austrian parents, Steiner was an international figure, scientist, educator and artist. Steiner's interests inspired movements of renewal in education, medicine, architecture, science, agriculture, religion, arts and human consciousness. Steiner founded the first Waldorf School in 1919 in Stuttgart, Germany, when Emil Molt, a wealthy industrialist and owner of the Waldorf-Astoria Cigarette Factory, asked him to help create a school for the families of his workers.

The Waldorf School of Bend (WSB) is one of over 1000 independent Waldorf schools and 2000 Waldorf Kindergartens in 60 countries throughout the world. The community of the Waldorf School of Bend joins a global community of children, parents, teachers and friends who have made a commitment to work toward social renewal through Waldorf education.

Basic Principles & Elements of Waldorf Education

Through the curriculum and atmosphere at the Waldorf School of Bend, we strive to meet children at each developmental stage, helping them to flower into free individuals. Children are recognized as having physical, emotional and spiritual needs as well as intellectual capacities. Artistic, cognitive and practical lessons are combined to nurture the strengths, potential and uniqueness of each child.

At the heart of the Waldorf method is the conviction that *education is an art*. Whether the subject is arithmetic or history or physics, the presentation must live. It must speak to the child's experience. To educate the whole child, subjects are brought to life through work with head, heart and hands.

Affiliations

WSB is an Associate school member of the Association of Waldorf Schools of North America (AWSNA) and the Waldorf Early Childhood Association of North America (WECAN). AWSNA & WECAN aid member schools to assure quality throughout the Waldorf community.

EDUCATIONAL PHILOSOPHY

Early Childhood Programs (Kindergarten & Pre-Kindergarten)

An important aspect of Waldorf education is the emphasis on the relationships among teachers, children, and parents through the years. The task of the Early Childhood teacher is to help the child develop physically in a healthy way. This provides the proper foundation for the development of the child's social, academic and spiritual life. Teachers strive to create an environment in which the young child feels secure, loved and recognized. The child's security arises out of being surrounded by beauty and by experiencing the certainty of a rhythmic life. Daily, weekly, and seasonal rhythms help to instill a healthy habit of life.

Student-Teacher Ratio

The Early Childhood student-teacher ratio is at least one teacher for every ten children.



WALDORF SCHOOL OF BEND

In the Grades, we believe the growth of trust and understanding is nurtured by the stability of staying with the same teacher and classmates. The class teacher, whenever possible, continues with the class for the first six grades, until they enter the junior high program in 7th grade. The children also regularly work with other Subject teachers.

The Waldorf Grades curriculum is designed to complement and support the unique development of each child, as it naturally unfolds. The curriculum is dynamic and strives to balance social, physical and intellectual development. As the teacher journeys through the grades with his/her students, he/she experiences the changing forces of the children over the years. The grades teacher inwardly adjusts accordingly in order to continually meet and understand the needs of his/her students. In addition to academic learning and skill development, there is respect and reverence for the natural world, a foundation of a model for healthy living, and a desire to serve humanity. The Waldorf curriculum is designed to promote a lifelong love of learning.

Arts in Education

The arts – drama, painting, music, drawing, form drawing, crafts, and handwork – are integrated into the entire curriculum, including math and science. Educating through the arts brings vitality and wholeness to learning, balancing intellectual development. The integration with academics and the arts is reflected in the main lesson subject books created by the students.

Subject Programs

For 2017/18 school year the following Subject classes will be offered:

Handwork - 1st through 8th Grade

Woodworking - 5th through 8th Grade

Spanish - Early Childhood through 8th Grade

Vocal/rhythm/choir - 4th through 8th Grade

Movement - 1st through 8th Grades

Garden/Culinary - 2nd through 8th Grades

Practical Arts

Practical Arts in the Waldorf Curriculum enhances the main lesson and teaches valuable living skills. Over the years, students learn knitting, cross stitching, felting, crochet, hand and machine sewing, weaving, gardening, cooking and woodworking.

“The brain discovers what the fingers explore. The density of nerve endings in our fingertips is enormous. Their discrimination is almost as good as that of our eyes. If we don’t use our fingers, in childhood and in youth we become “finger-blind,” this rich network of nerves is impoverished – which represents a huge loss to the brain and thwarts the individual’s all-around development. Such damage may be likened to blindness in itself. Perhaps worse, while a blind person may simply not be able to find this or that object, the finger-blind cannot understand its inner meaning and value.”

~Matti Bergstroem, Professor and Neurophysiologist



WALDORF SCHOOL OF BEND

Foreign Languages

Foreign languages play an essential role in the curriculum of a Waldorf School. It was Rudolf Steiner's plan to have children exposed to two contrasting foreign languages (for example, a "heart" language and a "head" language) beginning in Early Childhood and continuing through eighth grade. The voice of a culture speaks to the peoples' expression of life. In this way a child begins to experience many ways of meeting the world. Flexible thinking is inspired.

For this year we are coalescing our language resources into deepening our Spanish program. Our intent is to ensure our Spanish program is excellent and prepares our child to excel in the Spanish language when they enter high school. With our Spanish program solid, we will then look to reintroduce and second "head" language to meet Steiner's intent to inspire flexible thinking.

Music

Singing and playing an instrument requires a level of listening that engages the child's whole being. Waldorf teachers gear musical instruction toward the child's developmental level and strive to integrate it within the curriculum in a way that strengthens learning as a whole. Music conveys an inner logic, wisdom and beauty that strengthens the sense of self within the context of the whole and creates a sense of harmony and social awareness.

Singing begins in Early Childhood and continues as part of the daily rhythm throughout the grades. Vocals, rhythm and choir are part of our Subject curriculum in 4th through 8th grades.

The pentatonic flute is used in 1st and 2nd grades. Generally, the diatonic flute begins at the end of 3rd grade and continues through 5th grade. The children are introduced to the alto recorder in 6th grade and the tenor recorder in 7th grade. Stringed instruments are traditionally introduced in 4th grade and there are group, ensemble and solo opportunities in the upper grades. While we are not offering a strings program in the curriculum this year, after school programs are offered to further meet the needs of our children and community. In addition to after school strings lessons, vocal and piano lessons are also offered to augment the curriculum music program. As soon as resources are available, integration of a full strings program back into the overall music curriculum is one of the school's top Subject class priorities.

Festivals and Rhythms of the School Year

In a Waldorf School, annual celebrations and observances of the seasonal and cultural festivals help to develop the children's relationship to their larger community and cultural environment. The festivals include songs, stories, verses, games and activities known in a variety of cultures. While each class studies many cultural festivals or celebrations, each local Waldorf school selects specific festivals to reflect the nature of their unique community. These yearly rhythms are repeated just as we keep to daily classroom routines and rituals, thus creating a safe, secure environment where learning and growing can occur. While teachers plan the festivals, parent support is essential to their success. Our annual calendar will list the dates of each festival, and informational flyers giving you further details and history will be left in your family's mailbox. Our website (www.bendwaldorf.org) also lists the festivals and events we participate in each year.



WALDORF SCHOOL OF BEND

Friday Gatherings

Friday Gatherings are another way WSB comes together in community. The various grades perform songs, verses and plays and it is a great opportunity to experience the curriculum unfolding. We begin most gatherings with our school verse and end with our school song. Both are provided below. For the First Friday of every month, when school is in session, a specific grade and curriculum will be highlighted.

School Verse

This is our school. May peace abide here. May the rooms be full of contentment. May love dwell here: love of one another, love of our school, and love of life itself. Let us remember that as many hands build a house, so many hearts build a school.

School Song

Tis a gift to be simple

Tis a gift to be free

Tis a gift to come round

Where we aught to be

And when we have come to a place just right

We will be in the valley of love and delight.

When true simplicity is gained

To bow and to bend we shan't be ashamed

Turn oh turn will be our delight

Till by turning and turning we come round right!

Existential Questions and The Role of Religion in the Waldorf Curriculum

The Waldorf curriculum is not connected with any particular religion. The word religion is derived from the Latin “religio,” which means to re-unite. It is an expression of the universal human quest for meaning, for our source and our destiny. Throughout human history, people from all cultures have asked, “Who am I?” “What am I doing here?” “What does it mean to be human?” Throughout the world we share questions about creation, good and evil, and what exists beyond the starry cosmos and unknown dark matter. These soul questions live deeply within all humanity. Many lessons throughout Waldorf education propose questions of universal implication. We explore mythology, literature, history, science, and art in a way that evokes discussions and pondering of universal questions. Students live in an atmosphere that is permeated with (not devoid of) the quest for self-knowledge, and for the



WALDORF SCHOOL OF BEND

exploration of life's deepest mysteries. The Waldorf curriculum is designed to create the appropriate relationship between a child and these questions. Through art, a child builds a relationship with beauty, and in studying science, one seeks an understanding of truth. Out of beauty and truth develops a sense of morality and reverence for life that leads to questions of existence.

Assessments and Screenings

The following assessments or screenings are offered at the Waldorf School of Bend:

- First Grade Readiness (conducted by Kindergarten Teacher)
- Second Grade Screening and Assessment (conducted by the Faculty)
- Fifth Grade Assessment (conducted by the Faculty)
- Child Studies (conducted by the Faculty)
- Portfolio Assessment (conducted by individual class teachers)

Parent-Teacher Conferences

Parent-Teacher Conferences are held once a semester allowing teachers and parents to discuss the student's progress, assess academic, developmental and emotional growth, develop student objectives. These meetings are required by enrollment at WSB as they are so vital to forging the pivotal partnership between teachers and parents to shepherd student success. During these meetings teachers will provide a synopsis of your child's progress to include quarterly/block rotation assessments. Parents may always request a Parent-Teacher meeting outside of these conferences to address additional concerns or questions in a timely manner. There is no school on the days Parent-Teacher Conferences are scheduled.

Class-Parent Meetings

Class Parent Meetings are held periodically throughout the year as deemed appropriate by the class teachers. These meetings focus on bringing the class teachers and all parents of children in the class together to discuss the curriculum, rhythm of the class, to provide insights on Waldorf education and address parental questions and concerns. Attendance at these meetings is also required by enrollment at WSB and monumentally important in building a united class parent body. These meetings are conducted in a class community format so that all may gain from the insights and dialoged shared, and open, honest communication can be established.

End-of-the-year Student Reports

In addition to Quarterly Reports (Grades 1-3) and Block reports (Grades 4-8) provided throughout the year, within two weeks of the end of school, teachers will complete individual student reports, to be given to parents, detailing the child's progress during the year. The report will also cover general classroom curriculum, Subject curriculum and projects conducted that year.

SCHOOL GOVERNANCE

The Waldorf School of Bend is a private, non-profit school dedicated to the Waldorf curriculum. Like many Waldorf schools, our school is guided by the Board of Directors, Faculty and Parent Body, with



WALDORF SCHOOL OF BEND

the daily operation of the school guided by the administration, all working together and dedicated to the mission and values of WSB.

The Faculty & College of Teachers

The College of Teachers, together with the Faculty, sets and carries out important policy directions affecting the school's educational programs, academic standards, and curriculum development. The Faculty Chair guides the daily activities of the faculty and teaching rhythm of the full-time faculty and Subject teachers. The College of Teachers, a subgroup of the faculty and guided by the College Chair, ensures that the impulse and intention of Waldorf education is present in every aspect of the curriculum, grounds, and the festival life at the Waldorf School of Bend. The College Chair also facilitates the development and mentorship of all faculty. He/She also acts as the primary liaison to parents and the school community in interpreting how WSB implement the intension and impulse of Waldorf education.

The Board of Directors

The Board of Directors is responsible for the fiscal and legal management of the school. It has elected officers and at-large members. The Board is comprised of parents, faculty and community members who are willing to devote time and energy to the legal and financial aspects and long-term vision of the school. From time to time, the Board may delegate certain tasks and responsibilities to committees. Board committees may include members from the community as well as Board and Faculty members.

Administration

The Administrative Team, led by our School Director, supports the daily operations of the school and serves as a liaison between the Faculty, Board and Parent Body/Council. The Administrative Team is responsible for the day-to-day oversight and management of the school, and is responsible for enrollment, outreach and office operations. The current Administrative Team consists of the School Director, Admissions Director and WSB Counselor.

Parent Council

The mission of the Parent Council is to foster the well-being of the school community by facilitating communications among the bodies of the school and inspiring parent participation in school life.

Parent Council Class Representatives have the following responsibilities:

- Attend all meetings or arrange for a substitute from your class
- Forward meeting minutes to class
- Bring forward ideas for enriching WSB community life
- Be knowledgeable about school policies as defined by the Parent Handbook
- Welcome new families to our community and guide them to the Parent Handbook
- Serve the interests and represent the opinions of the parents in your class
- Participate in community events, including fundraising, festivals and outreach

All representatives have a voice at Parent Council and may vote when making decisions. Parent Council is facilitated by a Chairperson or Co-chairpersons, who set meeting agendas and the calendar, and act as a resource and support for Parent Council members working on on-going projects.



WALDORF SCHOOL OF BEND

SCHOOL OPERATIONS

Hours of Operation

The Main Office is staffed from 7:45 a.m. to 4:00 p.m. on Monday, Tuesday, Wednesday and Friday, and from 7:45 a.m. to 2:30 p.m. on Thursday.

Early Childhood Program Hours

Kindergarten/Pre-Kindergarten 8:30 a.m. - 12:30 p.m.

Grade School Program Hours

1st grade 8:30 a.m. - 1:30 p.m.

2nd-8th grade 8:30 a.m. - 3:00 p.m.

Classes start at 8:30 a.m. Please do not drop off children before 8:15 a.m. Every Thursday and on early release days, all grades are released at 1:30 p.m.

Afternoon Adventures

An Afterschool program is provided based on the need of our students and their families. The program is designed to bridge the gap for Early Childhood students and 1st graders from release to the grades release at 1:30 or 3:00pm, and to provide activities and clubs for older students from 3:00 to 5:00pm. A maximum of 18 children a day can be scheduled. Program slots will be first come, first served and must be reserved in advance. A limited number of drop-in slots will be kept available for last minute needs or emergency situations. Finally, students who remain at school after 3:15 p.m. without prior coordination (regardless of grade/age) will automatically be placed into the program (supervised status), and applicable charges will be assessed. Please contact the office for current reservation requirements and rates.

School Arrival and Departure

To support the rhythmic life of each student, on-time arrival to school is imperative. To begin the school day as a unified whole is a committed effort that profoundly affects the habit life of the class and the individual student. This effort will help the students establish good habits, a rhythmic relationship to time, and a strong will that can serve them in their educational journey.

Sign In and Sign Out

Children in Early Childhood through Grade 3 must be accompanied by a parent or other designated guardian every day. The school has legal responsibility for each child until that child's parents (or other designated guardian) have assumed care of the child. Students in Grades 4 and up can be signed in or out by a parent or teacher. After sign out, the parent is responsible for the child. Please do not allow your child to wander or play unattended in the parking lot or on the grounds before or after school.



WALDORF SCHOOL OF BEND

Parking spaces closest to the main entrance will be available for parents to facilitate drop-off and pick-up during school hours. If dropping off or picking up a student, please utilize a parking space so the driveway does not become blocked.

Pick Up By Authorized Individuals

Children may leave with adults who are not their parents/guardians only if the individual is entered into the child's BigSIS on-line student record via the BigSIS Parent Portal or if the parent authorizes alternative pickup arrangements in writing. You may send a note with your child advising staff of alternative arrangements or write a note on the class sign-in sheet. If there is no written authorization from the parent, staff will call the parent to verify the arrangements. Otherwise we cannot release your child to another person.

Attendance and Tardiness Policy

The curriculum is created to promote a rhythmical unfolding of the day, the week and the year that then allows learning to take place in a balanced way. By promoting regular attendance, we allow the student to experience what has been designed for him or her. Assemblies and special performance events require the participation of each student in the designated class. Families are asked to schedule appointments and travel around important class and special performance events including events hosted by Subject teachers such as music.

Grade School Absence Policy

When a grade school student is absent:

1. Please call the main office with a message for the teacher by 8:00 am.
2. If a child is picked up from school any time before normal release time, the family member must notify the teacher and main office and sign the child out on the classroom attendance sheet for the day.

Excused Absence includes

1. Illness
2. Serious illness or death of immediate family member
3. Mandated medical appointments* (i.e., medical procedures or specialist appointments that cannot happen at any other time) accompanied by a physician's note (or other relevant medical personnel's)
4. Observance of religious holidays
5. Those mandated by the school (e.g., conjunctivitis, lice, etc.)

A family member must call on the day of absence. If a child is absent for three days or more in a row, a doctor's note must be sent to school. The teacher(s) will consider a grade appropriate plan for making up the work missed.

* Please schedule standard medical and dental appointments during after school hours.



WALDORF SCHOOL OF BEND

Experiential Excused Absence includes

1. Family educational travel
2. Cultural learning experiences

Experiential absences must be pre-approved by the class teacher and all Subject teachers must have advance notice of the absence.

Unexcused Absence includes

1. An excused absence that is not accompanied by a phone call or note to explain the circumstances
2. An experiential absence that has not been coordinated with the class teacher
3. Vacations
4. "Home days"

Upon the third **unexcused** absence of a given semester (August through December or January through June), the teacher contacts the parents to determine if there is a common cause for the absences and what assistance can be offered. Upon the fifth **unexcused** absence, a Student Success Plan conference may be held among the parents, class teacher, College Chair and School Counselor (please note that a student in grades seven through eight may attend such meeting with the group). Upon the eighth **unexcused** absence of a given semester, the parents, class teacher, College Chair, Counselor and the Director will meet to contemplate whether the WSB experience meets the family's needs. This group will consider if the student's educational needs are being met and assess how the school can further assist the family. More than ten **excused or unexcused** absences accrued in a given semester or 20 **combined absences** over a school year can also impact the student's progression and enrollment at the school. The same process of review mentioned above will be followed to determine the student's continued enrollment at WSB and what assistance can be offered to help the family take full advantage of WSB's experiential learning environment. (Note: Through prior coordination with WSB, these absentee totals may be exceeded to take advantage of a lengthy Experiential Excused Absence opportunity.)

Early Childhood Absence

Early Childhood vacations and home days must be pre-approved by the teacher to be counted as an excused absence.

Children in Early Childhood who have not arrived by 9:15 a.m., and have not coordinated with the classroom teacher prior, should remain at home that day and it will be counted as an unexcused absence.

Grades Tardy Policy

The school day begins for all classes promptly at 8:30am. If you believe your child is going to be late, please call the main office as soon as possible. When a student arrives after 8:30, parents are responsible to stay with student until the classroom teacher can integrate them into the on-going classroom activities. This may be immediate or may require a parent and child to wait for a natural

WALDORF SCHOOL OF BEND

break in the classroom rhythm. Please discuss with your child's class teacher what their specific requirements are for integration back into the classroom if tardy.

Upon the third tardy of a given semester (August through December or January through June) in a two-week period, the teacher contacts the parents to determine if there is a common cause for the tardiness and what assistance can be offered. Upon the fifth tardy in a months' time, a Student Success Plan conference may be held among the parents, class teacher, College Chair and school counselor (please note that a student in grades seven and eight may attend such meeting with the group). Upon the eighth tardy of a given semester, the parents, class teacher, College Chair, Counselor and Director will meet to contemplate whether the WSB school experience meets the family's needs. This group will consider if the student's educational needs are being met and assess how the school can further assist the family. More than ten tardy days accrued in a given semester or 20 combined tardy days over a school year can also impact the student's progression and enrollment at the school. The same process of review mentioned above will be followed to determine the student's continued enrollment at WSB and what assistance can be offered to help the family take full advantage of WSB's experiential learning environment.

Early Childhood Tardy Policy

Since there is a need to support a gradual and flexible approach for the younger child, in the Kindergartens late arrivals will be noted in the attendance record and teachers will contact the family if it is a chronic situation.

Restroom Use

Early Childhood Procedure

- The restroom facility is located outside the classroom. Therefore, one teacher will supervise the classroom and one teacher will be **in the hallway outside the boys' and girls' restrooms** to support as needed. No child under the age of five will be allowed to go to the restroom without supervision.
- If a child in Early Childhood needs to use the bathroom during a recess time outside, an adult or appropriate aged student chaperone will accompany the child to the restroom.

Grades Procedure

- Please inform your class teacher if your child needs special assistance using the bathroom.

Disaster Preparedness

All staff are instructed in fire drill and emergency procedures and the children practice fire drills and other emergency drills regularly during the school year. The primary means for emergency notification is the school's community emergency texting program. Additional notifications will be posted on website, school Facebook page and sent via e-mail as soon as possible.

WALDORF SCHOOL OF BEND

Security and Visitor Policy

The external doors to the school are locked from 8:45am until 15 minutes prior to Grades release time to control access in and out of the school. A doorbell is located to the right of the front doors to gain access during school hours. Any visitor will be let in by Administrative staff and asked to sign in when they arrive and sign out when they leave. Visitors to Early Childhood classes have additional visitor policy requirements (please see the Early Childhood handbook if applicable).

Emergency School Closure/Late Start

The Waldorf School of Bend ordinarily follows the emergency closure decisions of the Bend-La Pine School District. If the decision to close the school is made, it will be made no later than 7:15 a.m., and a text message notification will be sent to the WSB community. As soon as practical, additional notifications will be posted on the school website, school Facebook page and/or sent via e-mail. Other sources of school cancellation information can be found on local television and radio stations, and through contacting the Bend-La Pine School District Inclement Weather Hotline at (541) 323-7669.

- If the Bend-La Pine School District announces school cancellation, WSB will be closed.
- If the Bend-La Pine School District announces a two-hour delay:
 - WSB's Early Childhood program will be cancelled.
 - WSB's grades classes will begin two hours late. School ends at the normal time.

Ultimately, the safety of WSB students is the most important factor. If parents decide it's best for their child to remain home on an inclement weather day, we support families in that decision however please inform the school as soon as practical. If WSB determines safety dictates a deviation from a Bend-La Pine School District closure or non-closure, notifications will be sent via text, website postings and e-mail with additional notifications to local TV and radio stations.

Substance Policy

Any intoxicants (i.e. alcohol, medicinal or recreational marijuana, etc.), smoking and other uses of tobacco are prohibited on school property, including interiors and grounds, and at all school-sponsored activities. As such, no individual deemed under the use of any intoxicants is allowed on campus or to participate in school sponsored field trips etc. This includes all teachers, staff, parents, students, volunteers and visitors.

Reporting Child Abuse or Neglect

As required by law, any suspected case of child abuse or neglect will be reported to the Oregon Department of Human Services. The Child Abuse Hotline number for Deschutes County is 541-548-9499. All employees of WSB are mandatory reporters per Oregon State law and are trained annually to deal with the complexities of potential abuse or neglect situations.

Class Field Trips

Field trips are an important part of the Waldorf curriculum. Students, staff and chaperones are expected to maintain the same high standards when out in the larger community as are required while at school. No electronic games or toys should accompany children on field trips. Students traveling in private cars

WALDORF SCHOOL OF BEND

must use seat belts and will not sit in the front seat where airbags are in place, unless they meet the required height/weight limit. Teachers and drivers will bring copies of the class emergency contact information and school provided first aid kits on field trips. Field trip permission forms are used for trips away from school. However, neighborhood walking excursions (for example, to the local park) are authorized by the enrollment agreement without a separate permission form.

Parent Volunteers

All parents that wish to volunteer in the classroom or accompany a class on field trips as a chaperone are required to complete the **Oregon Criminal History Verification of Applicants** form. For those parents who wish to volunteer in the Early Childhood classroom, they will need to register with Oregon Office of Child Care Central Background Registry. Both forms can be completed in the office or online. In addition, all parents that volunteer to drive other students in their private vehicles must provide proof of automobile insurance and current driver's license. One of the pivotal classroom parental volunteer opportunities is the role of Class Parent.

Class Parent (or Parents as there can be more than one)

In general, the Class Parent organizes the practical support that parents give the teacher and the class. Class parents are a communication and organizational link specifically between a teacher and parents of the class about class and school events.

Some Class Parent responsibilities include (but are not limited to) the following:

- works with the class teacher before the beginning of school to determine if any tasks need to be completed before school starts and helping plan work days, if needed
- acts as a liaison for the teacher with parents;
- welcomes new families to the class;
- assists in organizing field trips;
- assists or organizes volunteers to assist, with class projects and classroom assignments, including faculty meals, Annual Auction, festivals and other fundraising projects
- organizes and encourages class participation in general school fundraising;
- organizes class participation in all-school events, such as the class project for the annual school auction
- documents class events during the course of the year to be included in the school newsletter and history, including class plays, festivals and school assemblies;
- offers to take notes for the teacher at class meetings for distribution to parents/teacher;
- thank parents for their volunteer work during the year;
- organizing class gifts for the teacher at winter break, birthdays and at the end of the year

Pets

Due to possible allergies and unpredictable behavior, **please do not bring pets into the school** for drop-off or pick-up of your child. Only certified pre-approved animals are authorized in the school and in the classrooms as a part of a pre-arranged presentation and as long as they have written documentation of good health, including current rabies vaccination on hand. Please discuss this with the administrative staff and your child's teacher prior to a desired event.



WALDORF SCHOOL OF BEND

Tuition/Fee Payment and Refund Policy

Please refer to your enrollment contract for tuition rates, payment schedule and refund policy. Payment processing of all school tuition and associated fees is conducted on behalf of WSB by Smart Tuition. Questions regarding the amount of tuition or fee charges can be directed to the WSB. Questions regarding actual payment processing should be directed to Smart Tuition's Customer Service Center. Smart Tuition contact information: (1) Parent Portal: parent.smarttuition.com, (2) E-mail: parents@smarttuition.com, (3) Phone: (888) 868-8828.

School Photos

In the fall, a professional photographer comes to our school and takes portraits of each individual child and group photos of each class with their teacher. Advance notice will be given in the newsletter and/or by notice in your family's mailbox at school.

Lost and Found

The lost and found box is located at the end of the hallway leading to the main playground. Periodically, unclaimed items are given to charity. The school will provide notice before a donation occurs.

Requirement for and confidentiality of Student Records

Information on your child's records is privileged and confidential. The school will not distribute or release information in your child's record to anyone without your written consent. As part of your child's enrollment you will be required to sign a records release form to enable WSB to request and garner school records from your child's previous school(s). You are also required to keep your child's health information, emergency contacts and family account information updated by using the Parent Portal of our database at <https://bendwaldorf.bigsis.com/portal/>. You will, upon request, have access to your child's complete records. Upon request, we will transfer your child's records to you or any other person you identify per Oregon statutes.

COMMUNICATION

Telephone and Cell Phone Policy

Our phone number is 541-330-8841. Messages are checked regularly during school hours.

We strive to create an atmosphere in which children and teachers are free from the oversaturation of media that they experience outside of school. This supports the work the teachers do in the classroom by creating an environment in which the entire school building supports the Waldorf curriculum. In support of that effort we ask that all adults in the building uphold a commitment to only use devices in the school office and not in learning spaces. The following areas are considered learning spaces and are therefore media free; all classrooms, hallways, the play yard and great room. Your efforts to make phone calls and texts before entering the building are appreciated. Please share this information with babysitters, friends, and guests.



WALDORF SCHOOL OF BEND

Children are not permitted to have cell phones (includes watch phones etc.) in the classroom or on the playground. If a parent would like to send a cell phone to school with their child for safety reasons (walking to and from school etc.), please discuss this with the class teacher so that a safe location can be found to keep the phone during school. If students need to contact their parents during the school day, teachers will excuse them to the office to accomplish. For safety reasons, class teachers may choose to keep their personal cell phone with them while with the children on the playground and fieldtrips. **Please note: The Early Childhood area is a cell phone-free zone.**

Classroom Updates

Class teachers and/or Class Parent will provide parents a classroom update, note, or newsletter every week, or as needed by the class. These are normally done through e-mail. In addition, the Parent Council Representative for each class will meet with the Parent Council and provide updates to the class teacher and other parents in the classroom about all school opportunities to work on festivals, fundraising and community outreach projects. Class Parents, who are the primary assistants for each classroom teacher, are also great resources on what's going-on in the classes and how parents can assist their child's class.

Family Correspondence

Each family has a "Family Box" in the Main Office where correspondence and other documents will be provided. Please check your family's box at a minimum weekly.

School Newsletter

Our school newsletter is published every other week during the school year and sent by e-mail. Additionally, a quarterly newsletter will be produced this year to highlight activities, provide insights into Waldorf education and deepen our communication with our community. These newsletters can be e-mailed to extended family upon request.

WSB Family Binder

School binders are no longer provided with the integration of our BigSIS Student Management System. All information, and more, that was previously provided in your binders is now available through you family's BigSIS Parent Portal.

All School Gatherings

All School Gatherings are scheduled at a minimum twice during the school year to provide an opportunity for the Board of Directors and Faculty to present information that is pertinent to the entire school and community. It also affords the school community a forum to ask questions, voice concerns and discuss the state of the school and its growth and development. Our entire community of parents and staff are required to attend these gatherings to strengthen our ability to guide our school.

Online Communication

Our school has an comprehensive website that is updated on a regular basis and provides information on upcoming events, class activities and the overall rhythm of the school. The address is



WALDORF SCHOOL OF BEND

www.bendwaldorf.com. Additionally, you may check us out on our Facebook page to connect with community members and with members outside our immediate community for activities, events and information sharing.

HEALTH AND NUTRITION

Snacks and Lunch

In the early childhood programs, snack is provided each day (a snack schedule is posted outside the classroom). Early childhood students should bring a lunch from home **only** if they are staying for aftercare. Grades students should bring a snack and lunch from home.

Parents must notify the class teacher and the office of any food allergies that are discovered after enrollment and not indicated on the enrollment documents. Students are not permitted to share food. **Our campus is peanut free. Please do not send foods containing peanuts or peanut products in your child's snacks and lunches. Additional restrictions may be present in individual classrooms based on class student/teacher restrictions.** Your classroom teacher will provide you any additional restrictions prior to the school year.

Please follow these guidelines to provide for a smooth social atmosphere and focused learning environment. We appreciate your support.

- Provide healthy natural/organic food choices when possible. Vegetables, leafy greens, whole grains and proteins provide essential nutrients. (Following this guidance is also appreciated when participating in community activities where families are sharing or providing food. i.e. Festivals, potlucks etc.)
- Please do not pack gum or candy.
- Microwaves and toaster ovens are not available for children's use; therefore, we recommend students use a stainless steel/insulated thermos for hot foods.
- Bring food in a bag, basket or lunch box free of distracting, commercial/media-related images. If you choose pre-packaged foods, please select packaging free of such images.

Illnesses

Since we do not have the space or staff to supervise sick or recovering children, it is best to keep them home if they are not well enough for outdoor play. A parent will be called if a child develops a fever or is too sick to participate in class. A place to rest quietly away from the group will be provided until a parent or alternate arrives. Please be sure your child is well enough to participate in all activities before returning to school. A child who has had a fever may return when his or her temperature has been normal for at least 24 hours. Remember to advise the office of any contagious or transmittable illnesses so that the teachers and parents of exposed children can be notified. Parents are responsible for checking their child's health before bringing the child to school. You will be notified and your child will be sent home if he or she has one or more of the following symptoms:



WALDORF SCHOOL OF BEND

- fever over 100 degrees
- diarrhea (more than one loose stool in 24 hours)
- vomiting, nausea
- severe cough
- skin or eye lesions
- rashes that are weeping or puss-filled
- stiff neck and headache
- difficulty breathing or wheezing
- complaints of severe pain
- any suspected communicable illness, such as conjunctivitis, strep, lice

If a child has mild cold symptoms that do not impair functioning, the child may attend/remain in school and the parent(s) will be notified when they pick up their child. Staff will contact the child's parents in case of a sudden illness.

Medications

Medications will be administered according to state regulations. Only medications (over the counter or prescription) provided by parents will be administered by school personnel with specific parental written consent. Parents would need to complete a medical release form if their child needs medication provided during the school day. Please be sure the teacher understands the medical needs of your child.

Head Lice Policy

Our school has a no-nit policy, which requires that children remain at home until all nits (lice eggs) are removed. If lice or nits are discovered at school, the parents will be called to pick up and treat the student immediately. This policy must be enforced, as it is virtually impossible for us to distinguish treated, dead nits from live nits. If a case is detected, each child is required to be checked by WSB staff or a professional before entering the school.

PARENT/STUDENT CONCERNS & DISCIPLINE

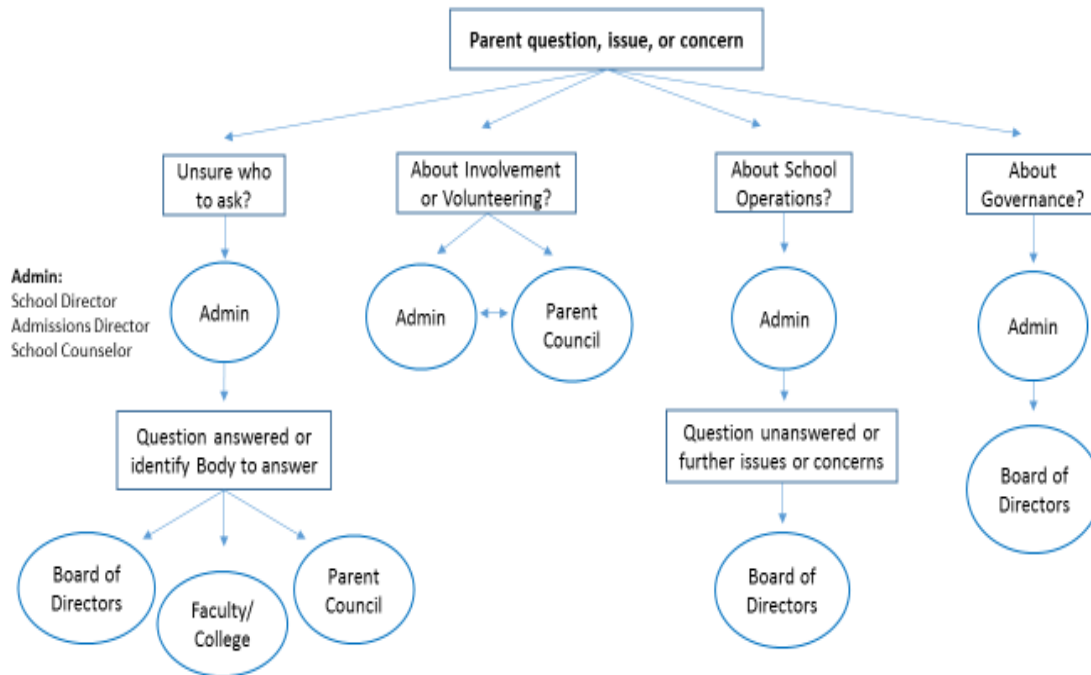
Parent-Teacher Questions, Student Concerns & Communication Flowcharts

For the health of the school, each of us must responsibly communicate information about our school in a positive, accurate and respectful manner. Parents and teachers work together at the Waldorf School of Bend on behalf of the children.

If you have questions or concerns regarding your child or the classroom, please contact your class teacher as soon as possible. If your questions or concerns are not resolved or cannot be addressed by the classroom teacher, please follow the communication flowchart below to resolution of your issue or concern.

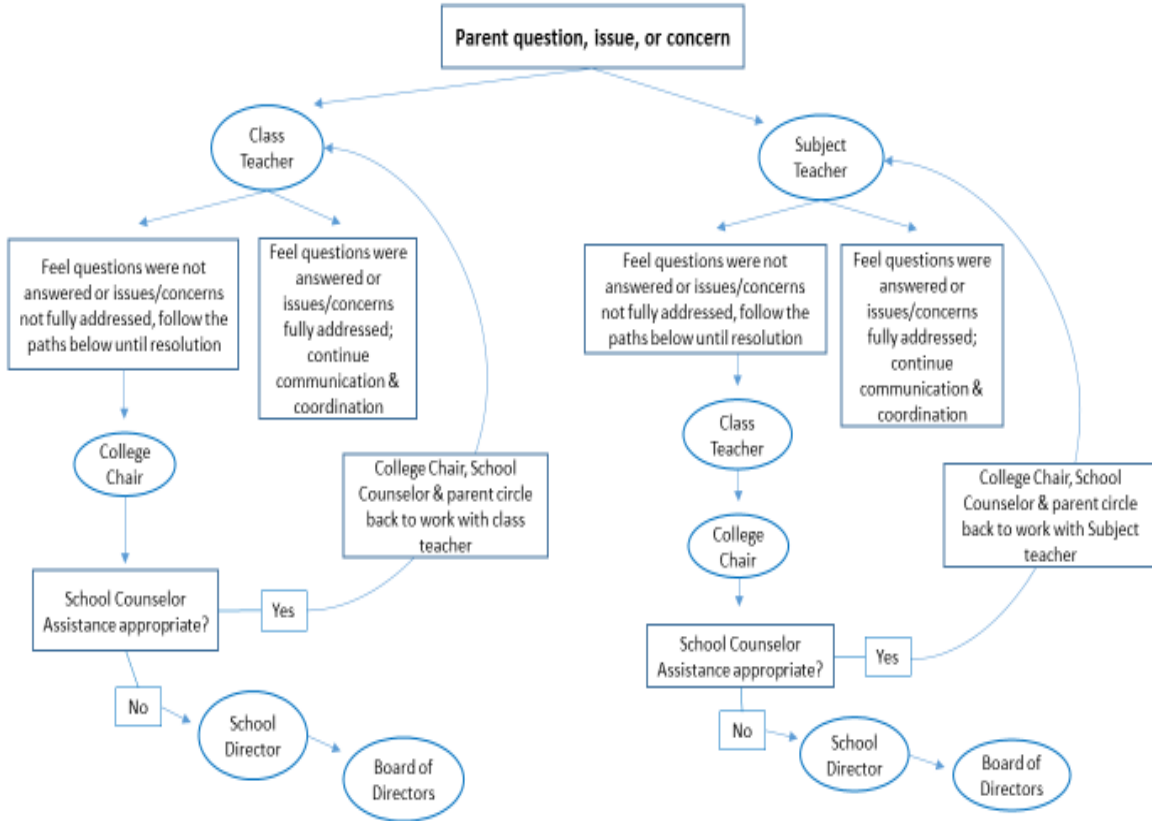
Communication Flowchart 1

WSB Parent Communication Flowchart - General



Communication Flowchart 2

WSB Parent Communication Flowchart - Classroom/Student Focused





WALDORF SCHOOL OF BEND

Student Success Plan (SSP)

When a child requires ongoing additional guidance and/or classroom support the teacher or parent may request a meeting to establish a Student Success Plan (SSP) to discuss the child's specific needs. This meeting plan is separate from a parent-teacher conference or casual check-in before and after school or via email. While the parent-teacher conference is a time to look at the whole child and their successes and challenges, the SSP process is meant to address specific issues that may have come up over the course of the school year or in the child's life and make a collaborative plan between teacher and parents to address said issues. A SSP may be established to assist students with classroom challenges or it may also be formed to assist students who are excelling, meet their fullest potential. If a teacher/WSB deems a SSP be instituted, it is imperative that the parents/guardians of the student in need participate fully and without hesitation.

Student Success Plan (SSP) Outline

The first team, made up of teacher, parents and possibly a note taker, will develop a plan to include the most effective strategies for working with the child in the classroom and at home. During this first meeting a schedule of follow-on meetings will be developed on a structured timeline and goals and benchmarks will begin to be identified. Follow-up meetings will be held, according to the recommended timeline of the team, and potential additional support and/or personnel will be identified to join the team if necessary. A copy of the plan will be kept in the student files. An outline of the general SSP process is outlined below.

Step 1) What you can expect at this 1st meeting:

This is the time to address any emerging questions or concerns the teacher and parents may have concerning their student. We will be discussing your child's strengths, any known information about your child and any modifications tried. Finally, we will brainstorm strategies and put a plan into action. We will also name who is responsible for each part of the plan and create a realistic timeline. As long as sufficient progress is being made, this group of parents and teacher may continue to meet until the issue is resolved. If the issue requires further attention, the teacher or parent will request that we bring in a larger team to see what can be done to help resolve the problem.

Step 2) Building a Student Success team:

If ongoing assistance is needed for the child, the teacher or parent may initiate a second stage meeting. This meeting involves bringing in a Student Success team that may include but is not limited to: the WSB school counselor, WSB faculty chair, WSB college chair, therapists, doctors, local school district specialists or any other professionals the family may be working with. By working collaboratively, we strive to bring about the best possible solutions for each individual child.

Step 3) Assessment of progress:

This meeting is a follow up to Steps 1 and 2. At this stage ideally, we would like to be building on a plan or maintaining a program that has been successful for the child, teacher and family. If the team feels that



WALDORF SCHOOL OF BEND

all options have been attempted and there is still a significant problem, WSB and the family will look at whether or not continuing enrollment is the best course of action.

**WSB's SSP program is mandatory if deemed necessary by WSB faculty or staff. Continued enrollment at WSB may be subject to the parent's willingness to participate.*

***If meeting #1 has a successful outcome, there is no need for subsequent meetings.*

Waldorf School of Bend Code of Conduct

The children at WSB created a Code of Conduct to reflect our core values.

We at the Waldorf School of Bend will:

Use safety at all times

Be respectful of each other, ourselves and nature

Be caring and kind

Be responsible for our actions

Strive to find resolution

Stand with courage

Listen to our teachers

Ask for help when needed

Listen and strive to understand one another's points of view



WALDORF SCHOOL OF BEND

Discipline Philosophy

Our goal as the faculty and staff is to help each child attain his or her greatest potential. While social skills come easier for some children, developing a higher level of social behavior is a lifelong process. Recognizing this, we will do our best to model respectful, loving authority and will create a rhythmic, nurturing, healthy, structured, safe environment for students. In the forefront of our approach is the recognition of negative behaviors, such as bullying and related behaviors, which will not be tolerated and dealt with earnestly within our philosophy. Our primary goal is to see the best in a child come forth freely, without demands or forceful consequences.

The following is a guide to our general discipline philosophy:

- **Prevention** through preparedness to include: Teachers will provide a healthy classroom rhythm, set clear expectations and create a respectful and safe environment. Prompt and regular attendance helps children feel prepared and ready work with a positive attitude.
- **Redirection** and kind reminders are used to guide children toward appropriate choices.
- **Active listening and discussion** between conflicting students, to identify the feelings and needs of those involved.
- **Appropriate and consistent consequences** are delegated by the teacher depending on each individual circumstance. It may include a time-out period away from the group, work or will activities, an apology letter, etc. If an individual is not able to resolve the situation through the above approaches a Student Success Plan may be formed.
- **Unusual Incident Reports** are filed whenever an unusual incident occurs at school or on field trips. Examples of unusual incidents include: medical emergencies, physical injury of a child, threatening or abusive language to self or others, threatening or abusive actions to self or others. Parents are notified of the incident and a written description of the incident is drafted by the faculty/staff that are involved. Parents of children involved in the incident are required to sign an acknowledgement of the incident on the form. After an administrative review, parents will be offered a copy of the completed form. Additionally, a copy of the report will be placed in the student's file. Should the unusual incident be severe enough, there will be a Student Success team formed and the child may be suspended from attending school until the team is able to implement a plan (see SSP outline above).

WALDORF SCHOOL OF BEND

The following is an example of how in classroom discipline is handled at WSB:

Observe...identify/notice...**Disapprove** inappropriate behavior or actions



Discover

- Ask in an age appropriate manner...
- What happened?...
- What's wrong?...
- Why do you feel this way?...
- What's a better way to address the issue in question?...
- The extent of this discovery/discussion will be incident dependent i.e. is the first time this has happened, or is this a repeat occurrence?...



Do Over

- Give the student/students and opportunity to correct/modify their behavior

The process above is used for each occurrence of an issue. The first occurrence is usually the most in-depth especially in the discovery phase.

Consequences in a graduated order for repeat occurrences of same or similar issues:

1. Warning and/or apology if appropriate
2. Separation from class activities within classroom; pedagogical refocusing of energies into classroom tasks, activities, chores etc...
3. Separation from classroom i.e. for younger grades it may be to a bench outside the classroom to discuss with the teacher one-on-one; for older grades, it could be to the office
4. Separation to the office will entail an explanation to the School Administration on why they were asked to leave the class; based on this discussion/discovery a determination will be made whether to integrate the child back into class or elevate the issue further by calling the student's parents
5. Separation from school if it is apparent that after a discussion with the teacher, Counselor/Directors and parents the student is not equipped to be in school that day

Repeat incidents that continue to impede the student's progress or detract from the experience of the class as a whole will warrant the implementation of an SSP (see description below).



WALDORF SCHOOL OF BEND

THE ROLE OF THE PARENT

Family Involvement and Volunteerism

Family involvement is integral and indispensable to the school; and as such, there are several avenues for families to volunteer their time, expertise and enthusiasm. Many parents hold positions on the Board of Directors, choose to be a Parent Representative to the Parent Council or Class Parent for their child's class or volunteer at the school. A few of the creative ways families have participated in growing our community are by being a part of class field trips, working in the garden and helping to maintain the grounds or clean their child's classroom. By networking with fellow community members, families help keep the bonds among the children strong outside the classroom and build social relations among parents. All parents are asked to complete a Volunteer Survey at enrollment to highlight their areas of expertise and interest. As volunteer opportunities come to light WSB will be reaching-out to parents to volunteer in the areas in which they indicated they're interested in. If you have further questions regarding your family's volunteer contributions to the school, please reference the volunteer agreement portion of your child's enrollment contract.

Family Support

WSB relies on gifts of time, talent and treasures from our school community in order to serve our students. There are many ways each family can lend their support. Contributing to our Annual Giving Fund, attending our Wanderlust Ball and Auction, facilitating the Art Works campaign or shopping at our 4 Gnomes School Store are just some of the ways. Please visit our website or ask our staff about ways you can support the gift of Waldorf Education at WSB.

Families, Teachers and Administration Working Together

At the Waldorf School of Bend, we believe that regular communication among families, teachers and staff helps solidify and strengthen relationships. Weekly updates from the class teacher, the website, our Facebook page and a bi-monthly and quarterly newsletter from the School serve as ways to keep families informed and updated. All-School Gatherings, Parent-Teacher Conferences, Class-Parent Meetings, Parent Council Meetings and volunteer opportunities serve to further strengthen our community and collaboration. All families bring a unique perspective to our community. Many classes come together to discuss specific topics and meet off-campus to deepen relationships among themselves. The Parent Council also sponsors Parent Enrichment Evenings throughout the year to help families deepen their knowledge on how to partner in their child's development and education.

Parents can support the child's classroom experience by establishing regular meal times and bed times and limiting exposure to electronics and media. Provide a regular time and space for schoolwork and musical instrument practice to help deepen the appreciation for subjects being covered.

Dress Code

Education at the Waldorf School of Bend extends beyond the basic academia acquired in the classroom by taking into consideration the environment into which the children come when they attend school. We aim to surround the children with a nourishing environment that is beautiful and wholesome.

WALDORF SCHOOL OF BEND

As part of our unique curriculum, children play outside everyday unless the weather is dangerously cold or wet. Also, please, label all clothing – especially frequently lost items such as gloves, hats, and coats – with your family name or your child’s initials.

Children need to wear appropriate shoes - closed-toed - for safety in movement, and clothing suited to their activities and to the weather. Clothing should fit comfortably, not too tight nor too loose, not distracting in appearance and guided toward modesty in all cases. Layers are best in changing or unpredictable weather. Due to the level of daily activity, pants and skirts that have a tendency to fall down when the student is in motion must be worn with a working belt or suspenders.

The following styles are **not** suitable nor allowed at school or school functions:

1. Popular media, video, and sports-inspired images on clothing. Corporate or Licensed logos or images of any kind larger than the palm of a child's hand. Exceptions: WSB tees and sweatshirts, or larger images related to nature-based elements (such as plants/flowers, wildlife, landscapes etc.) are appropriate as long as they are not distracting to others and do not overshadow the child wearing the clothing.
2. “Spaghetti” strapped garments, which are defined as straps on blouses, dresses or tank tops narrower than the width of the child’s two fingers. However, “spaghetti” strapped clothing may be worn with a t-shirt or other sleeved garment underneath. Tops where the shoulder strap width is greater than the width of the child’s two fingers can be worn without any accompanying garment underneath. Necklines of blouses, shirts, dresses etc. should be cut no lower than 4 finger widths below the child’s collarbone.
3. Bare midriffs (check tops with arms raised!), visible underwear and tops with deeply cut armholes.
4. Clothing with tears, holes, or unfinished edges, such as cut-off jeans. Pants or skirts longer than the student’s shoes.
5. Skirts, dresses and shorts shorter than the bottom of the child's fingertips when their arm and hand are extended straight down to the side. However, these shorter shorts, dresses or miniskirts maybe worn if leggings or tights are worn underneath.
6. No skin tights (i.e. spandex, lycra, panty hose style or running style tights) without a skirt, dress or shorts over them.
7. Jewelry (other than simple small necklaces or small stud earrings in earlobes) – Kinder through 5th. (Moderate jewelry may be worn from 6th grade up.)
8. Any piercings other than earlobes.
9. Writing or drawing on skin (includes face paint, stickers, and tattoos.)
10. Perfume, hair dyeing or coloring, distracting hair-styles (such as Mohawks), henna treatments, false nails.



WALDORF SCHOOL OF BEND

11. Makeup and nail polish (Pre-Kinder through 6th.)
12. Light-up shoes or shoes that make noise. No flip flops or open toed sandals.
13. Shoes with heels more than 1"; heeled shoes must provide stability and support.
14. Hats, ball caps or knit caps in the grades classrooms during lesson times. Hats can be worn during outdoor activities, at recess and other times deemed appropriate by classroom teachers for the weather conditions and activities of the day.
15. Alternative sports/active wear (running shorts/tights etc.) may be worn by students 5th Grade and up who are engaged in school team, group or individual sports activities. These articles of clothing will be changed into or out of as appropriate for the time of the activity. Unless they comply with the above Dress Code, they will not be worn in the classroom.

NOTE: Jr. High students may wear nail polish and 'natural looking' make up. This privilege may be withdrawn if such becomes a distraction.

Grooming:

Good grooming is as essential as appropriate clothing. We ask boys and girls alike to have their hair neatly combed and out of the face. For Movement class hair needs to be tied back so that vision is never compromised. Any time a child is not appropriately dressed, alternative clothing may be provided by the School. If necessary, clothing will be turned inside out or covered. Parents will be contacted should repeated problems occur.

WSB understands that families may have religious or other devout beliefs which may be in conflict with some aspects of this dress code. Exceptions may be granted on a case-by-case basis in an effort to accommodate these beliefs. Please contact your child's class teacher to open a discussion about any exceptions to our school's policy.

Items to be Kept at Home

Candy, toy weapons, stuffed animals, radios, iPods, video games, cassette/CD players, and role-playing games (Star Trek cards, Magic cards, or any type of trading cards, for example) should not be brought to school. Matches, lighters, jack knives, and other potentially dangerous objects also have no place in school and will be confiscated.

Sexually explicit material has no place in our school and will be immediately confiscated if found. If a parent becomes aware at any time that this type of material has been present at school, we ask that the class teacher and the school administration be notified.

Media Policy

To support the work we do at WSB, we ask that parents eliminate media use during the week and strongly monitor or eliminate its use over the weekend. It is especially crucial for the children in grades Pre-K through 5 to be free from the excessive influences of the media.

WALDORF SCHOOL OF BEND

What children bring to school after a weekend of unsupervised video watching or unsupervised radio listening affects the class and its work. Based on direct observation of the children, our teachers have serious concerns about excessive exposure to the media. We feel the medium itself, as much as programming content, undermines healthy child development. A reliance on ready-made pictures reduces the child's ability to visualize both the written and the spoken word. Students who are accustomed to passively receiving have difficulty making the inner effort necessary to sustain an imaginative train of thought. There is a growing body of research supporting this position.

Essential to the Waldorf approach to education is the daily activity by students of reviewing the previous day's work. As the children sleep, the stories and experiences of the day are transformed and become their own. This process sparks the individual development of thinking. When a child is exposed to strong, fixed impressions, such as the media presents, this overnight process of taking in is compromised to a point where we know it cannot work at all as it is intended.

In the event that a child's media experiences are affecting his or her ability to benefit from the curriculum and thereby causing disruption to the daily life of the class, the teacher will request a meeting with the parents of the student. A child whose media experiences are disruptive to the class, classroom activities, or educational process is of serious concern to the faculty and may lead to a request to withdraw a student.

** As a reminder, Children are not permitted to have cell phones (includes watch phones etc.) in the classroom or on the playground. If a parent would like to send a cell phone to school with their child, please discuss this with the class teacher so that a safe location can be found to keep the phone during school. For safety reasons, class teachers may choose to keep their personal cell phone with them while with the children on the playground, at the park and on fieldtrips.*

The Waldorf School of Bend welcomes your feedback on this Parent Handbook. We hope that parents and students will find the information that is provided in this Parent Handbook useful and that it provides an opportunity for many open and honest conversations.

The Waldorf School of Bend appreciates every one of you for your commitment to this school and your child's education. We are so pleased that you have chosen to be a part of this community. Blessings on our School!